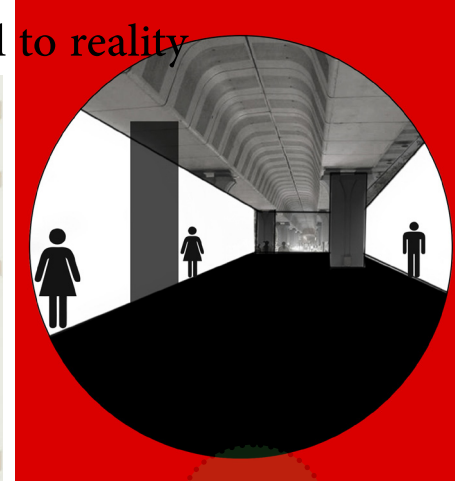
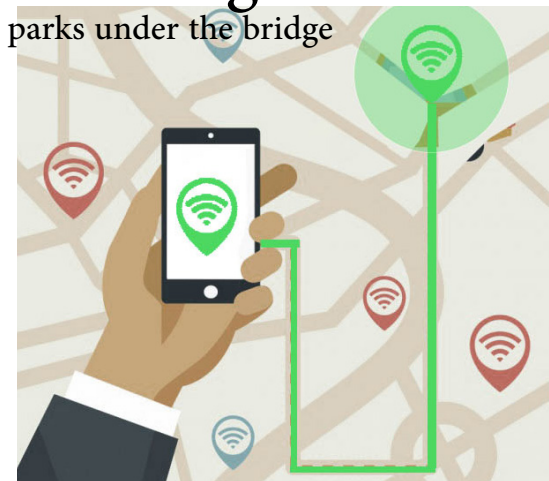


# Park-idge from virtual to reality



bridge

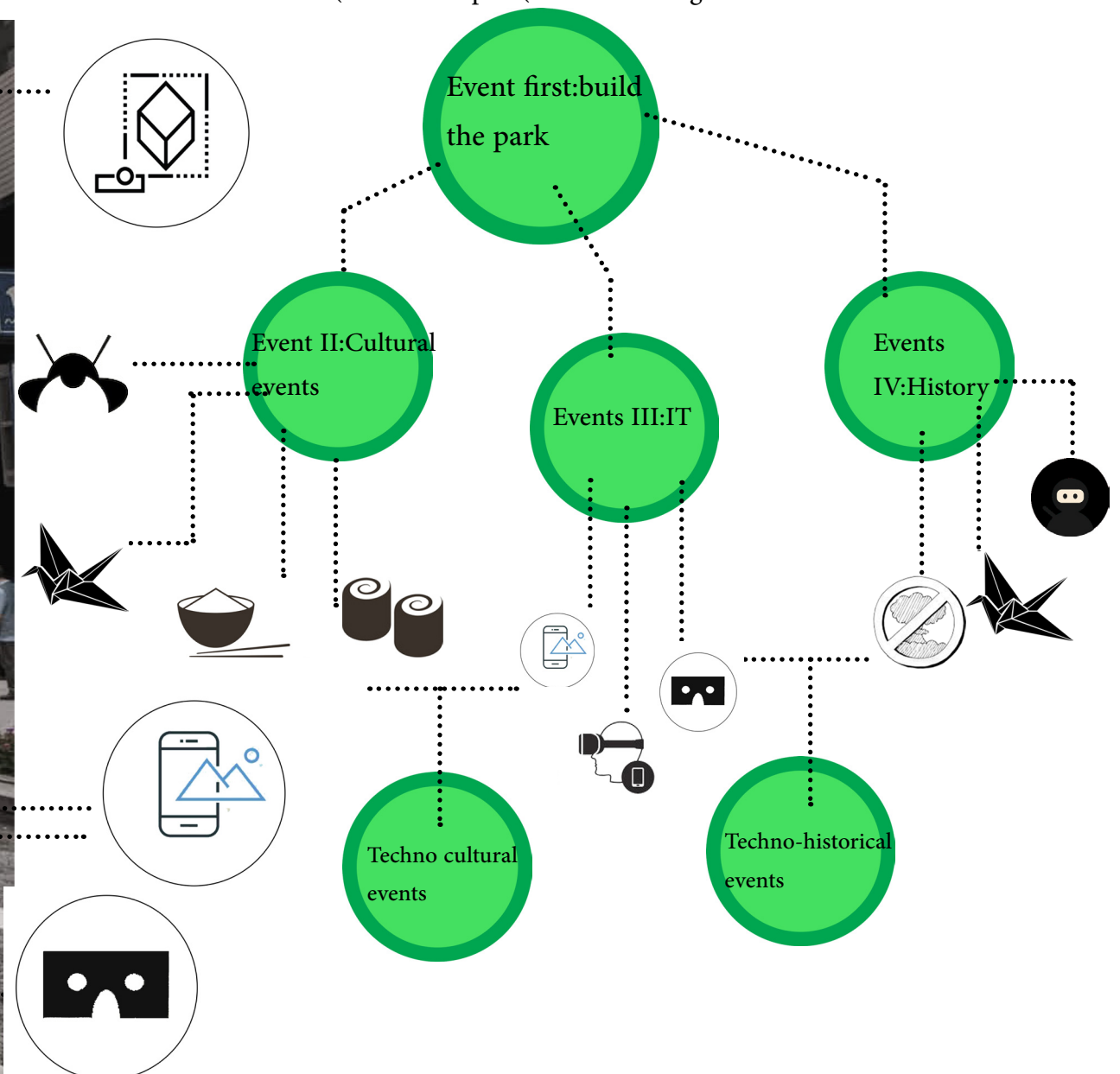
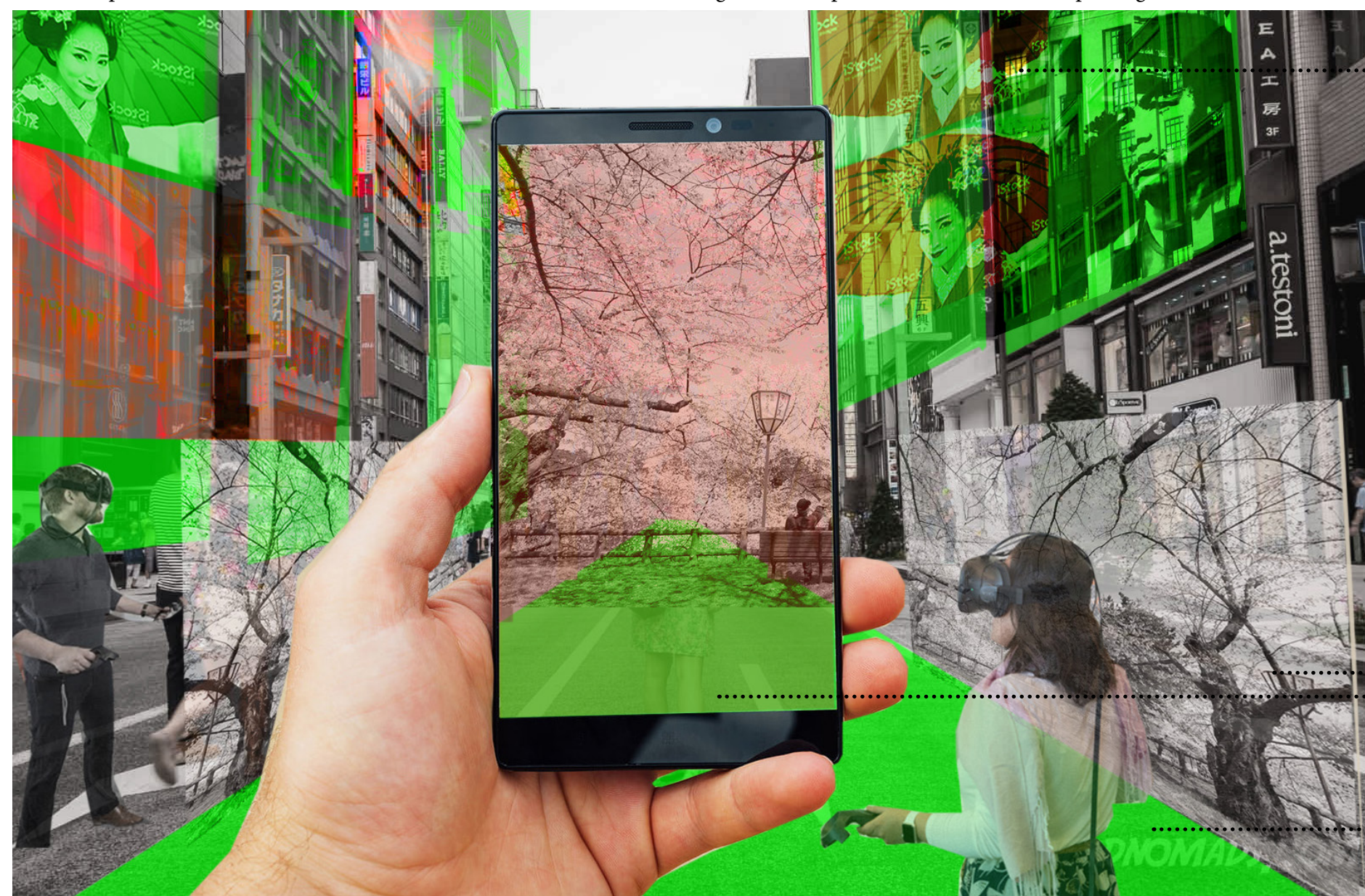
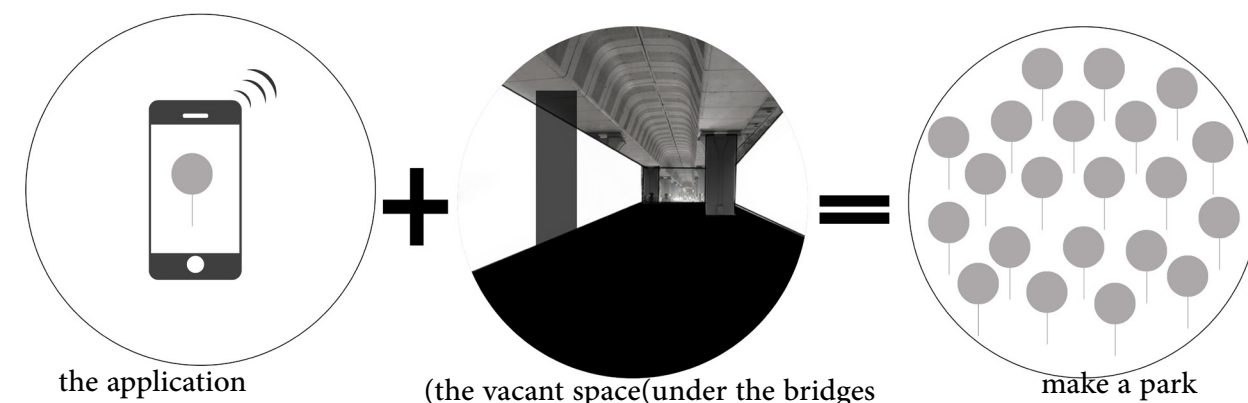


parkidge



In recent years the need for greenery has become crucial in the modern cities and one problem about this issue is the insufficient spaces to allocate for this purpose. So in the future this issue should be solved with using the technology. The design in this proposal is defined by an application called parkidge that is sort of an event-making app. This app concentrates on the vacant spaces of under the bridges with an event in it. The first event that is often the best events of all is turning that vacant spot into a green place, where people design and build it themselves. When there is an event going to be held under the bridge, the notification will come to the user. For gathering more people, there are some green paths defined that the people can experience the VR and AR on the facades of the buildings and these paths lead to the location. The final location is the place where the people gathered to make it into a small park that has a charging station and also video mapping on the ceiling of it. This process will continue and the next Notification will be declaring the next spot to be turned into a parkidge.

the site chosen is Ginza-with exploiting the vacant spaces the amount of green places that actually are social communities will increase

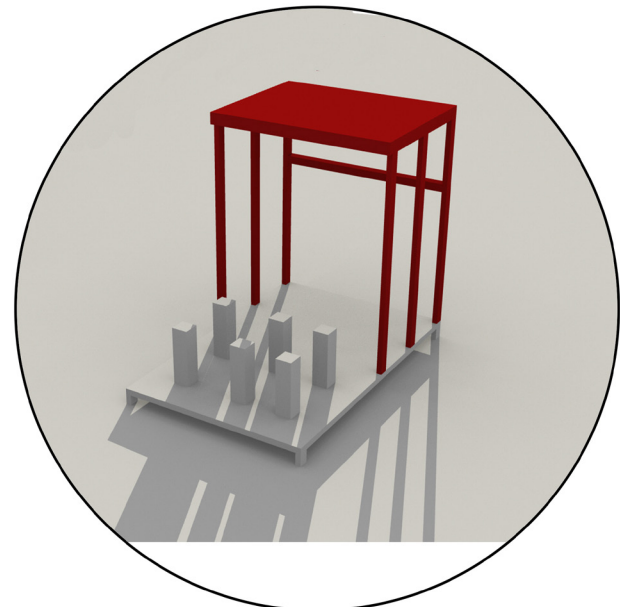




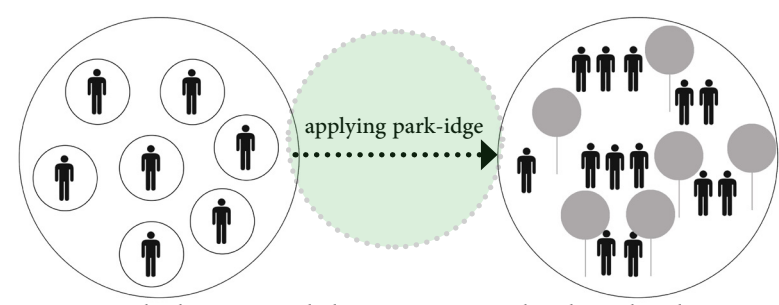
# Park-idge

Nowdays the definition of parks need to be changed based on .the need of the citizens and the social functions which they need

park-idge are the parks that people make and organize them

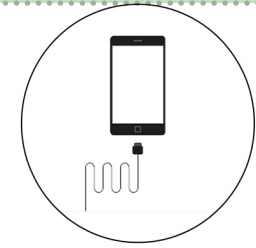


The charging station is derived from the color and form of the red entrnce in architectural culture of japan as a .place to pause and look

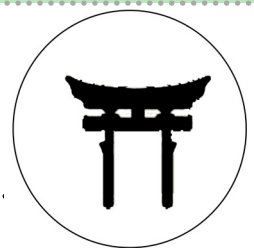


The interacton with the city and the citizens can be done by the presence of nature and that would be planting trees under the bridges that can turn the vacant lots in to small parks with cultural functions

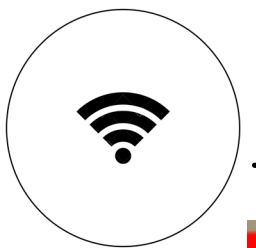
PARK-IDGE gather people through nature and technology



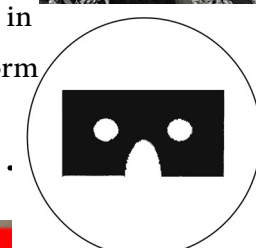
Charging station



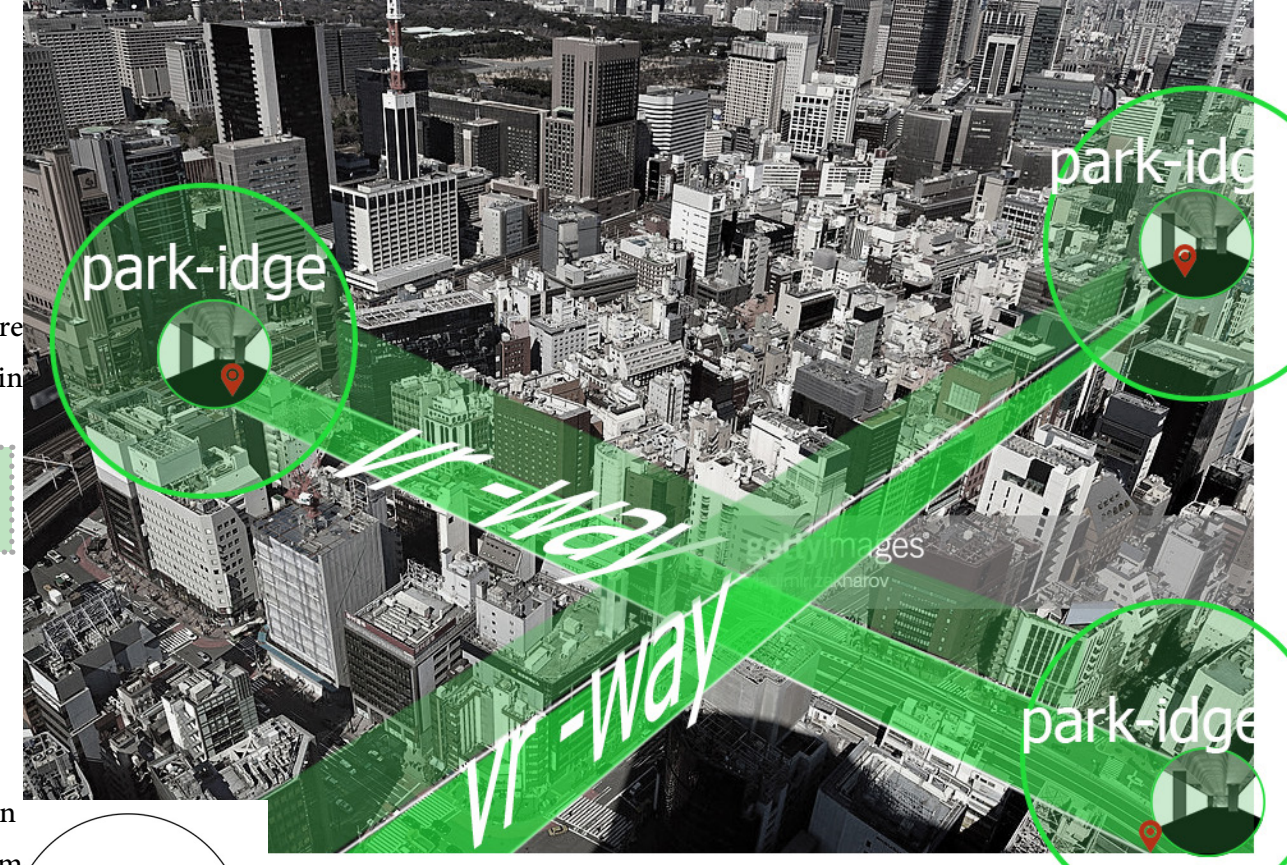
Using the red entrance in japan as the familiar form of charging station



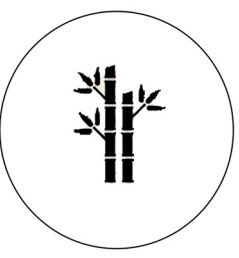
Free Wifi



using the ceiling as the place for vr and AR



the vr-ways are temperoray paths that are defined in the city to gather people by proposing them to use vr and ar in this path and this path will lead to a park-idge



planting the cherry trees as the contextual attention to japan



planting the trees and plants to make a social community